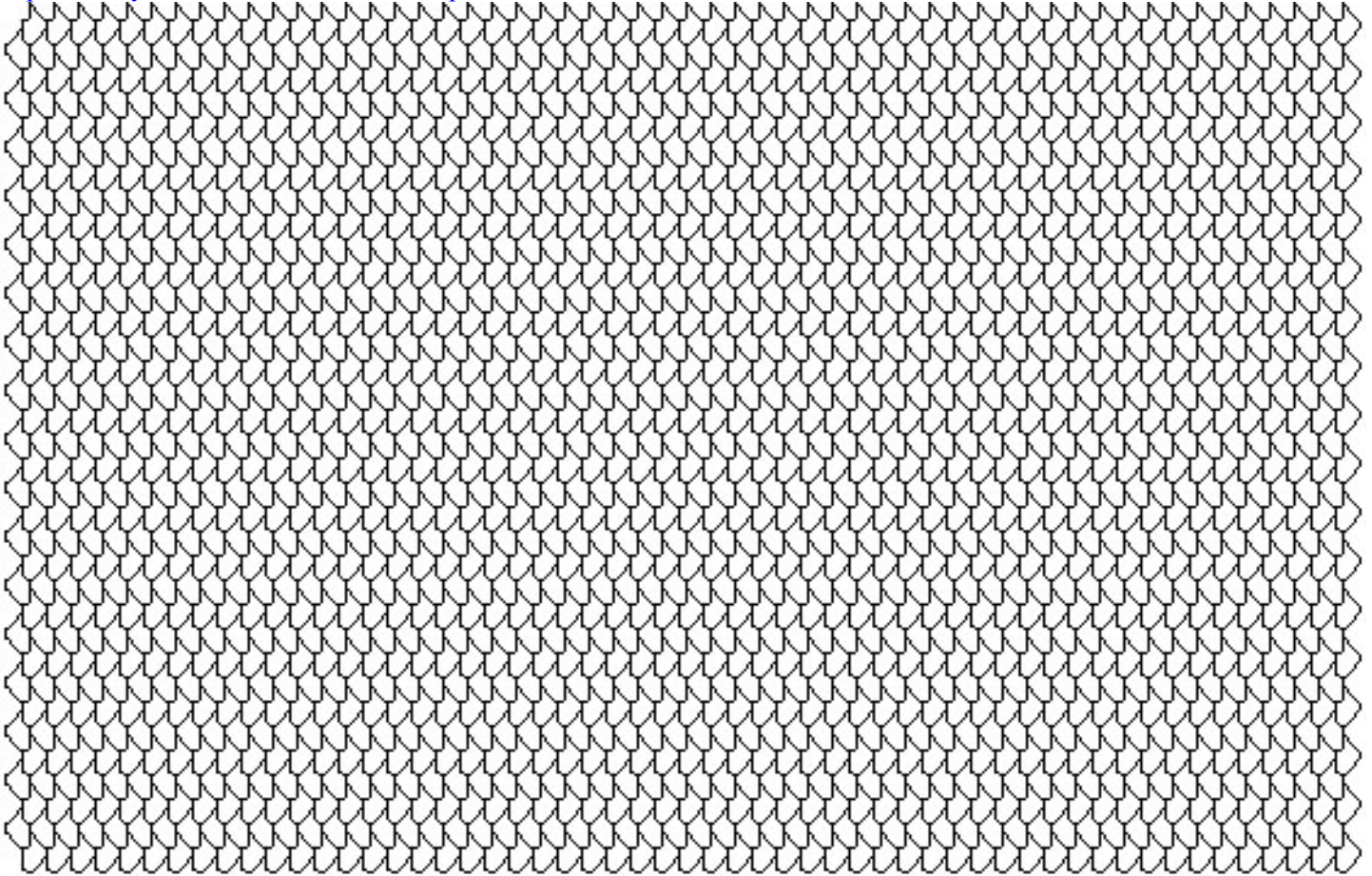


## Tapestry Crochet Graph Paper for Flat Pieces © Carol Ventura 1991

This is one of 8 tapestry crochet graph papers in my *Tapestry Crochet* and *More Tapestry Crochet* books. For pieces worked in rounds, the stitches stack up diagonally. On flat pieces, all of the stitches slant to the right on one row, then on the next row they all slant to the left. The tapestry crochet graph papers that I designed are different for that reason. My tapestry crochet graph papers also take into consideration stitch height, shape, and placement. The actual stitch height, or rows per inch measurement, will depend on the yarn, tension, and the number of carried yarns. The stitch height can significantly affect the proportion of the finished motif. The stitches will become taller with each additional yarn that is carried. To determine which graph paper to use, tapestry crochet a sample (while carrying the yarns), then measure the stitches and rows per inch. For more papers and information about using this tapestry crochet paper, please look at my *Tapestry Crochet* and *More Tapestry Crochet* books and page 11 at [http://mediad.publicbroadcasting.net/p/kenw/files/201110/5200\\_Crafts\\_Section\\_2.pdf](http://mediad.publicbroadcasting.net/p/kenw/files/201110/5200_Crafts_Section_2.pdf) and my free video at <http://www.youtube.com/watch?v=SZTqLx5OfI0>



*This tapestry crochet graph paper is designed for crocheting flat pieces back and forth with the front of the stitches always on the front side and when the number of stitches per inch equals the number of rows per inch. The bottom row is crocheted from left to right. Draw the motif one row higher to begin from right to left.*  
For more about tapestry crochet and my patterns and books, please look at [www.tapestrycrochet.com](http://www.tapestrycrochet.com).

